




 **(2020) Primary 5 Science (Term 4) - Catholic High** 

Add Questions **Assign** **Settings** **Review**

 Duplicate  Print  Delete

 **Assign Test**

Test Introduction

[+ Add Introduction](#)

65 Questions (61 Points)

Question Bank: 9,275 Questions 

Test Questions **0 Test Assignments**

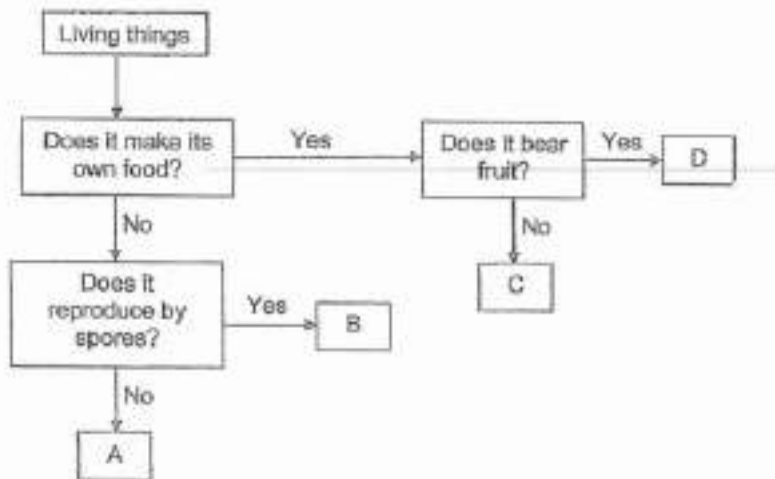
Question 1

Primary 5 Science » Primary 5 Science (Term 4)

2 pts

For each question, four options are given. One of them is the correct answer.

Study the diagram below.



Which of the following represents A, B, C and D?

	A	B	C	D
(1)	animal	mushroom	fern	flowering plant
(2)	mushroom	fern	bacteria	flowering plant
(3)	bacteria	animal	fern	flowering plant
(4)	bacteria	mushroom	animal	mushroom

- ✓ A) 1
- B) 2
- C) 3
- D) 4

Question Type: Multiple Choice
Randomize Answers: No
Date Added: Wed 8th Sep 2021
Last Modified: Wed 8th Sep 2021
QID#: 28,950,792

[Answers](#) |
 [Edit](#) |
 [Duplicate](#) |
 [Used In](#) |
 [Reorder](#)

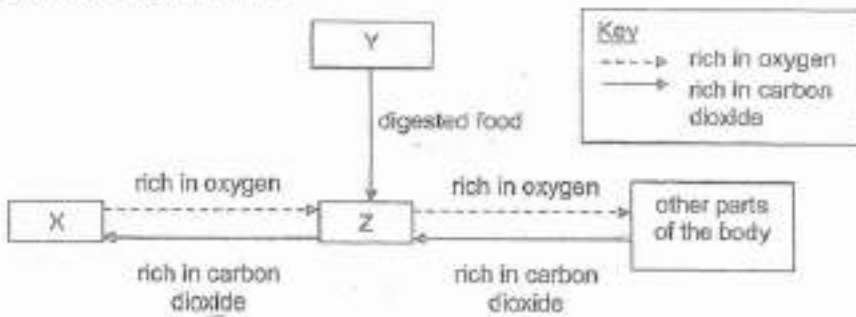
[Remove From Test](#)

Question 2

Primary 5 Science » Primary 5 Science (Term 4)

2 pts

Study the diagram below.



Which of the following correctly represents systems X, Y and Z?

	X	Y	Z
(1)	respiratory	circulatory	digestive
(2)	digestive	respiratory	circulatory
(3)	circulatory	digestive	respiratory
(4)	respiratory	digestive	circulatory

- A) 1
- B) 2
- C) 3
- ✓ D) 4

Question Type: Multiple Choice
Randomize Answers: No
Date Added: Wed 8th Sep 2021
Last Modified: Wed 8th Sep 2021
QID#: 28,950,804

[Answers](#) |
 [Edit](#) |
 [Duplicate](#) |
 [Used In](#) |
 [Reorder](#)

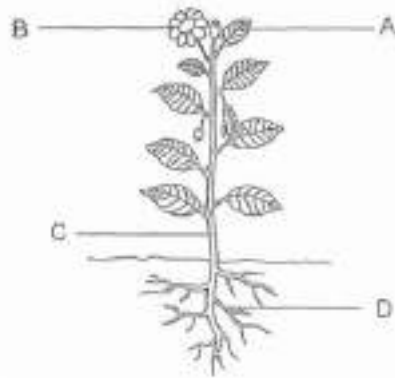
[Remove From Test](#)

Question 3

Primary 5 Science » Primary 5 Science (Term 4)

2 pts

Study the diagram below.



Which statement is **not** correct?

- ✓ A) Part B is found in all plants
- B) Part C holds the plant upright
- C) Part A needs sunlight to make food
- D) Part D absorbs water and mineral salts from the soil

Question Type: Multiple Choice
Randomize Answers: No
Date Added: Wed 8th Sep 2021
Last Modified: Wed 8th Sep 2021
QID#: 28,950,814

[Answers](#) | [Edit](#) | [Duplicate](#) | [Used In](#) | [Reorder](#)

[Remove From Test](#)

Question 4

Primary 5 Science » Primary 5 Science (Term 4)

2 pts

Study the life cycles of insects X and Y.



Based on the diagrams above, which statements are correct?

- A) Both insects can live on land and in water.
- B) The young of Y resembles its adult but not the young of X.
- C) Both insects have different number of stages in their life cycles.
- D) The young of X takes a longer time to develop into the adult stage than the young of Y.

- A) A and D only
- ✓ B) B and C only
- C) A, C and D only
- D) B, C and D only

Question Type: Multiple Choice
Randomize Answers: No
Date Added: Wed 8th Sep 2021
Last Modified: N/A
QID#: 28,950,824

[Answers](#) | [Edit](#) | [Duplicate](#) | [Used In](#) | [Reorder](#)

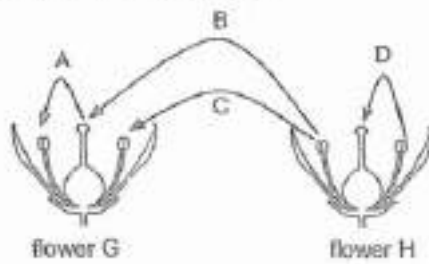
[Remove From Test](#)

Question 5

Primary 5 Science » Primary 5 Science (Term 4)

2 pts

The diagram shows flower G and flower H.



Which arrows show possible paths for pollination to take place?

- A) A and C only
- B) A and D only
- C) B and C only
- ✓ D) B and D only

Question Type: Multiple Choice
Randomize Answers: No
Date Added: Wed 8th Sep 2021
Last Modified: N/A
QID#: 28,950,839

[Answers](#) | [Edit](#) | [Duplicate](#) | [Used In](#) | [Reorder](#)

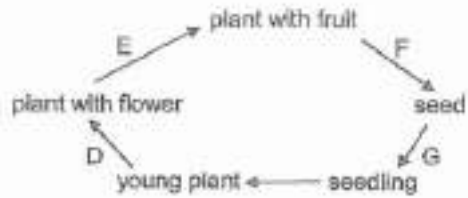
[Remove From Test](#)

Question 6

Primary 5 Science » Primary 5 Science (Term 4)

2 pts

The diagram below shows the developmental stages of a flowering plant.



Where do the processes, fertilisation and germination take place?

	fertilisation	germination
(1)	D	G
(2)	D	F
(3)	E	F
(4)	E	G

- A) 1
 B) 2
 C) 3
 ✓ D) 4

Question Type: Multiple Choice
Randomize Answers: No
Date Added: Wed 8th Sep 2021
Last Modified: N/A
QID#: 28,950,844

[Answers](#) | [Edit](#) | [Duplicate](#) | [Used In](#) | [Reorder](#)

[Remove From Test](#)

Question 7

Primary 5 Science » Primary 5 Science (Term 4)

2 pts

Which statements correctly show the similarities between sexual reproduction in humans and in flowering plants?

- A Both require pollination to take place before fertilisation
 B Both require male and female reproductive parts for reproduction
 C Both the ovaries will swell to become fruits and the ovules will become seeds
 D Both the male reproductive cell fuses with the female reproductive cell during fertilisation

- A) A and C only
 ✓ B) B and D only
 C) A, B and D only
 D) B, C and D only

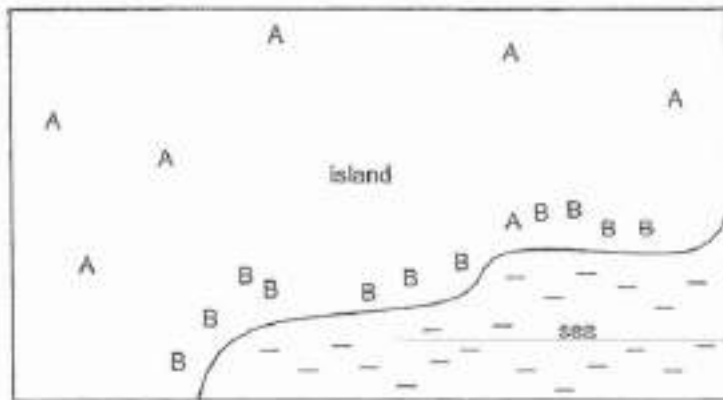
Question Type: Multiple Choice
Randomize Answers: No
Date Added: Wed 8th Sep 2021
Last Modified: N/A
QID#: 28,950,863

Question 8

Primary 5 Science » Primary 5 Science (Term 4)

2 pts

The diagram shows part of an island where two types of plants A and B are growing.



Which one of the following is likely to represent the dispersal method of the fruits of plants A and B?

	A	B
(1)	water	splitting action
(2)	splitting action	wind
(3)	animal	water
(4)	water	wind

- A) 1
 B) 2
 ✓ C) 3
 D) 4

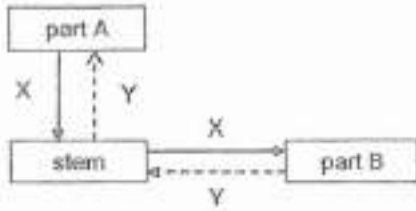
Question Type: Multiple Choice
Randomize Answers: No
Date Added: Wed 8th Sep 2021
Last Modified: N/A
QID#: 28,950,872

Question 9

Primary 5 Science » Primary 5 Science (Term 4)

2 pts

The diagram below shows how substances X and Y are transported in the different parts of the plant



What are parts A and B, and substances X and Y?

	part A	part B	X	Y
(1)	flower	leaf	food	water
(2)	leaf	roots	food	water
(3)	leaf	roots	water	food
(4)	leaf	flower	water	food

- A) 1
- ✓ B) 2
- C) 3
- D) 4

Question Type: Multiple Choice
 Randomize Answers: No
 Date Added: Wed 8th Sep 2021
 Last Modified: N/A
 QID#: 28,950,878

[Answers](#) |
 [Edit](#) |
 [Duplicate](#) |
 [Used In](#) |
 [Reorder](#)

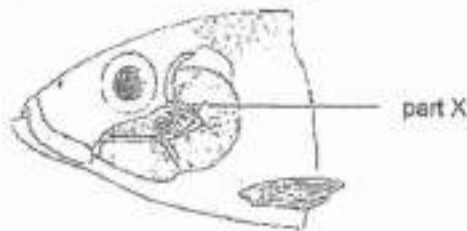
[Remove From Test](#)

Question 10

Primary 5 Science » Primary 5 Science (Term 4)

2 pts

The following diagram shows the respiratory system of a fish.



Which statement is **not** correct about part X?

- A) It is protected with a cover
- B) It has a rich supply of blood vessels
- ✓ C) It absorbs water containing dissolved oxygen
- D) It release carbon dioxide that dissolves into the water

Question Type: Multiple Choice
Randomize Answers: No
Date Added: Wed 8th Sep 2021
Last Modified: N/A
QID#: 28,950,918

[Answers](#) | [Edit](#) | [Duplicate](#) | [Used In](#) | [Reorder](#)

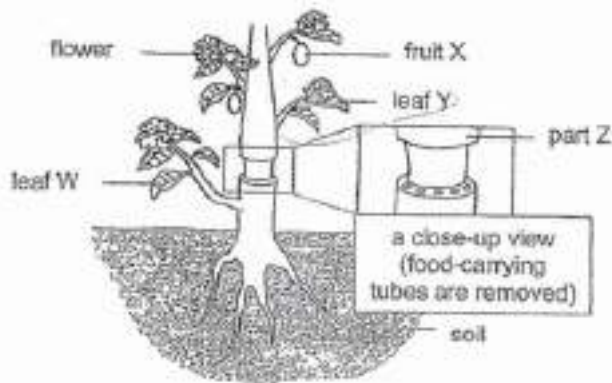
[Remove From Test](#)

Question 11

Primary 5 Science » Primary 5 Science (Term 4)

2 pts

Mrs Sim removed the food-carrying tubes from the stem of a plant as shown below. The water-carrying tubes remained in the stem.



After some time, she observed some changes in the plant. Which statement is correct?

- A) Leaf W remained green as food made by the plant was transported there
- B) Fruit X became bigger than normal as more water was being stored there
- C) Part Z was slightly swollen as water could not be transported from the stem to the roots
- ✓ D) Leaf Y remained green as removing the food carrying tubes did not affect the process of photosynthesis

Question Type: Multiple Choice
Randomize Answers: No
Date Added: Wed 8th Sep 2021
Last Modified: N/A
QID#: 28,950,925

[Answers](#) | [Edit](#) | [Duplicate](#) | [Used In](#) | [Reorder](#)

[Remove From Test](#)

Question 12

Primary 5 Science » Primary 5 Science (Term 4)

2 pts

Tom wanted to find out if the colour of leaves affect the ability of the leaves to photosynthesise. Which variable(s) should Tom keep constant?

- A Size of leaves
- B Colour of leaves
- C Amount of water given to the plant
- D Amount of carbon dioxide in the air

- A) B only
- B) C and D only
- ✓ C) A, C and D only
- D) A, B, C and D

Question Type: Multiple Choice
Randomize Answers: No
Date Added: Wed 8th Sep 2021
Last Modified: N/A
QID#: 28,950,935

[Answers](#) | [Edit](#) | [Duplicate](#) | [Used In](#) | [Reorder](#)

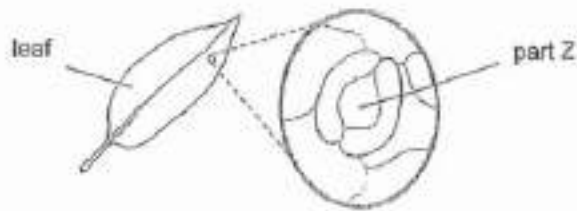
[Remove From Test](#)

Question 13

Primary 5 Science » Primary 5 Science (Term 4)

2 pts

The diagram below shows part Z which is found on the leaf of a plant.



Some pupils made the following statements.

Maya	More of part Z can be found on the underside of the leaf.
Fatimah	Part Z helps the plant absorb sunlight during photosynthesis.
Jaden	Part Z allows for gaseous exchange.

Which pupil(s) is/are correct?

- A) Maya only
- B) Fatimah only
- ✓ C) Jaden and Maya only
- D) Maya and Fatimah only

Question Type: Multiple Choice
Randomize Answers: No
Date Added: Wed 8th Sep 2021
Last Modified: N/A
QID#: 28,950,945

[Answers](#) | [Edit](#) | [Duplicate](#) | [Used In](#) | [Reorder](#)

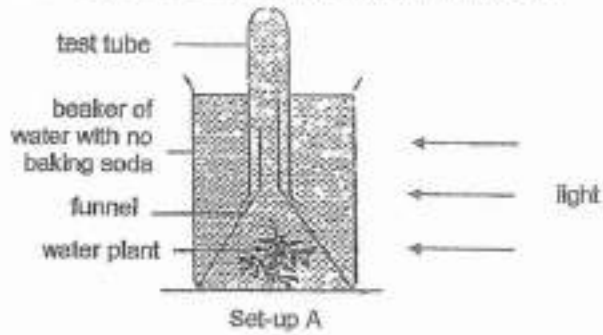
[Remove From Test](#)

Question 14

Primary 5 Science » Primary 5 Science (Term 4)

2 pts

Set-up A below is used to find out how the rate of photosynthesis is affected by the amount of carbon dioxide in the water.



Different amounts of baking soda is added to three other set-ups B, C and D to increase the amount of carbon dioxide dissolved in the water.

Which should be measured to show the rate of photosynthesis in each set-up?

- A) the mass of baking soda added
- B) the volume of water added in the test tube
- ✓ C) the amount of oxygen trapped in each test tube
- D) the amount of bulbs of carbon dioxide related by the water plant

Question Type: Multiple Choice
 Randomize Answers: No
 Date Added: Wed 8th Sep 2021
 Last Modified: N/A
 QID#: 28,950,956

[Answers](#) | [Edit](#) | [Duplicate](#) | [Used In](#) | [Reorder](#)

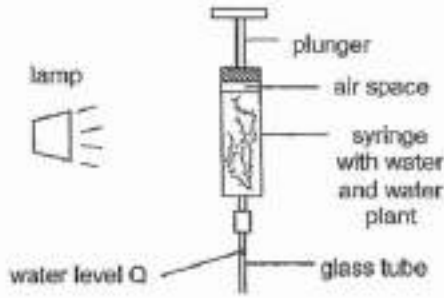
[Remove From Test](#)

Question 15

Primary 5 Science » Primary 5 Science (Term 4)

2 pts

Amy conducted an experiment with the set-up below. She switched on the lamp and observed that the water level Q in the glass tube moved after some time. The plunger remained at the same place.



In which direction did the water level Q move and what was the reason for the movement?

	water level Q moved	reason
(1)	up	Air moved into the glass tube.
(2)	up	Heat from the lamp caused the water to expand.
(3)	down	Plant gave out water during photosynthesis.
(4)	down	Oxygen collected in the air space.

- A) 1
- B) 2
- C) 3
- ✓ D) 4

Question Type: Multiple Choice
 Randomize Answers: No
 Date Added: Wed 8th Sep 2021
 Last Modified: N/A
 QID#: 28,950,963

[Answers](#) |
 [Edit](#) |
 [Duplicate](#) |
 [Used In](#) |
 [Reorder](#)

[Remove From Test](#)

Question 16

Primary 5 Science » Primary 5 Science (Term 4)

2 pts

Weenie wants to make a bookshelf for his books. The table below shows the properties of four different materials A, B, C and D.

material	strong	waterproof	flexible
A	✓	✓	
B	✓		✓
C		✓	
D		✓	✓

Which material should Weenie choose?

- ✓ A) Material A

- B) Material B
C) Material C
D) Material D

Question Type: Multiple Choice
Randomize Answers: No
Date Added: Wed 8th Sep 2021
Last Modified: N/A
QID#: 28,950,968

[Answers](#) | [Edit](#) | [Duplicate](#) | [Used In](#) | [Reorder](#)

[Remove From Test](#)

Question 17

Primary 5 Science » Primary 5 Science (Term 4)

2 pts

Some pupils came up with a sketch design of a tent for their camping trip. They added a window in the sketch for them to look at the stars at night.



They chose four materials shown in the table below based on their properties.

material	properties
P	<ul style="list-style-type: none"> waterproof transparent
Q	<ul style="list-style-type: none"> not transparent waterproof
R	<ul style="list-style-type: none"> strong flexible
S	<ul style="list-style-type: none"> strong not flexible

Which one of the following correctly represents P, Q, R and S?

	canopy	fastener	tent rope	window	pole
(1)	Q	S	Q	R	P
(2)	R	Q	R	P	R
(3)	R	Q	P	Q	S
(4)	Q	S	R	P	S

- A) 1
B) 2
C) 3
D) 4



Question Type: Multiple Choice
Randomize Answers: No
Date Added: Wed 8th Sep 2021
Last Modified: N/A
QID#: 28,950,977

[Answers](#) | [Edit](#) | [Duplicate](#) | [Used In](#) | [Reorder](#)

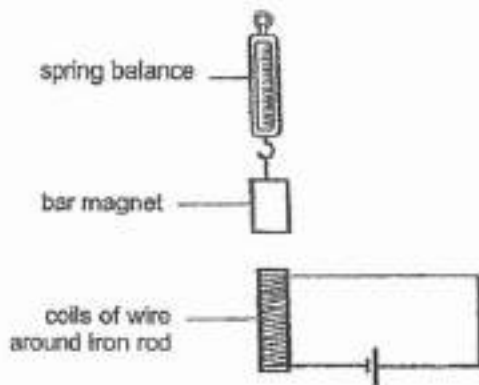
[Remove From Test](#)

Question 18

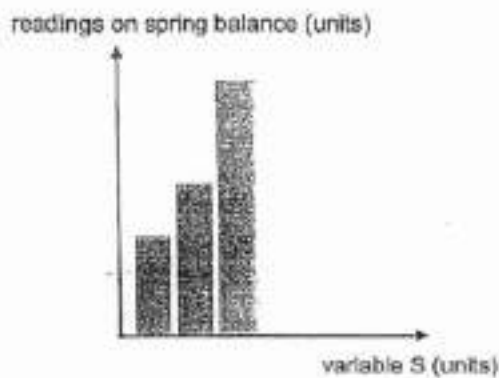
Primary 5 Science » Primary 5 Science (Term 4)

2 pts

Herman prepared a set-up as shown below.



He then made some changes to the value of a variable, S , in the set-up above and recorded the readings on the spring balance as shown in the graph below.



Based on the above results, which of the following could represent variable S ?

- A number of batteries connected in series
- B amount of heat applied to the bar magnet
- C number of coils of wire around the iron rod

- A) A and B only
- B) A and C only
- C) B and C only
- D) A, B and C

Question Type: Multiple Choice
 Randomize Answers: No
 Date Added: Wed 8th Sep 2021
 Last Modified: N/A
 QID#: 28,950,987

[Answers](#) | [Edit](#) | [Duplicate](#) | [Used In](#) | [Reorder](#)

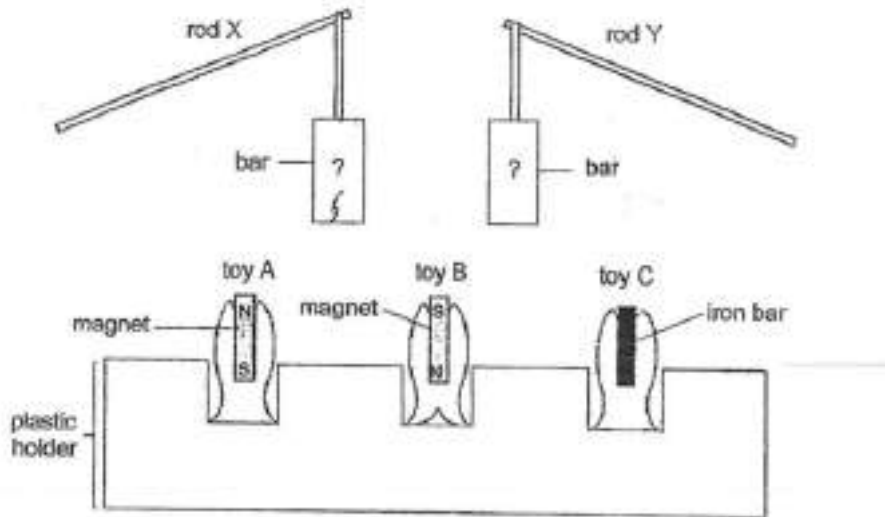
[Remove From Test](#)

Question 19

Primary 5 Science » Primary 5 Science (Term 4)

2 pts

Yusri made a game using the objects shown below.

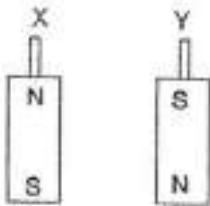


The lower end of the bar was used for catching a toy.

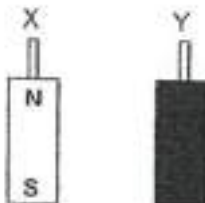
Rod X could catch toys A and C only.
 Rod Y could catch toys A and B only.

Which of the following shows the bars for rods X and Y?

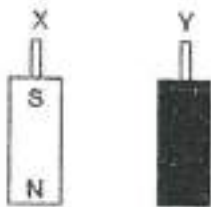
A)



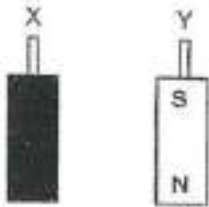
✓ B)



C)



D)



Question Type: Multiple Choice
 Randomize Answers: No
 Date Added: Wed 8th Sep 2021
 Last Modified: N/A
 QID#: 28,951,005

[Answers](#) | [Edit](#) | [Duplicate](#) | [Used In](#) | [Reorder](#)

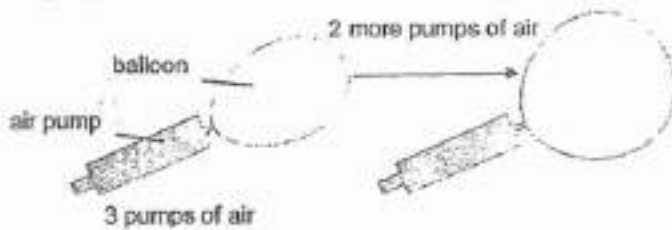
[Remove From Test](#)

Question 20

Primary 5 Science » Primary 5 Science (Term 4)

2 pts

Air is pumped into a balloon as shown below using an air pump.



What happens to the total volume and the mass of air in the balloon after two more pumps of air are given?

	total volume of air in balloon	mass of air in balloon
(1)	increases	increases
(2)	remains the same	increases
(3)	remains the same	remains the same
(4)	increases	remains the same

- ✓ A) 1
- B) 2
- C) 3
- D) 4

Question Type: Multiple Choice
Randomize Answers: No
Date Added: Wed 8th Sep 2021
Last Modified: N/A
QID#: 28,951,010

[Answers](#) | [Edit](#) | [Duplicate](#) | [Used In](#) | [Reorder](#)

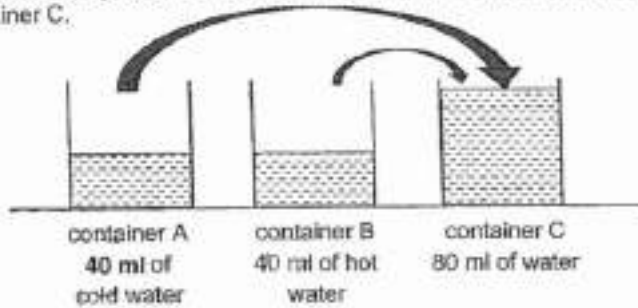
[Remove From Test](#)

Question 21

Primary 5 Science » Primary 5 Science (Term 4)

2 pts

Study the set-up below. The water in containers A and B were poured into container C.



What was the temperature of water in containers A and B at first, and in container C?

	temperature of water (°C)		
	container A	container B	container C
(1)	5	80	85
(2)	15	90	70
(3)	15	75	20
(4)	80	20	60

- A) 1
 B) 2
 C) 3
 D) 4

Question Type: Multiple Choice
Randomize Answers: No
Date Added: Wed 8th Sep 2021
Last Modified: N/A
QID#: 28,951,016

[Answers](#) | [Edit](#) | [Duplicate](#) | [Used In](#) | [Reorder](#)

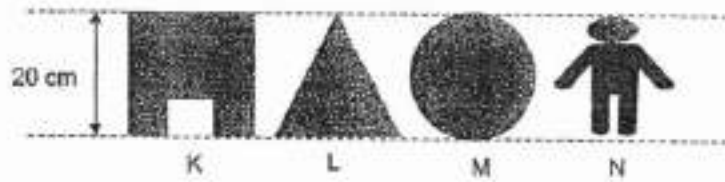
[Remove From Test](#)

Question 22

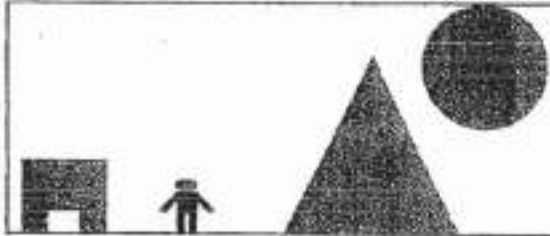
Primary 5 Science » Primary 5 Science (Term 4)

2 pts

The diagram below shows four cut-outs K, L, M and N from a piece of cardboard.



The shapes were then used to create a scene in a shadow puppet show as shown below. The positions of both the light and the screen are fixed.



Which of the following shows the correct order of the cut-outs from the nearest to the screen to the furthest from the screen?

	nearest to screen			furthest from screen
(1)	M	L	N	K
(2)	L	M	K	N
(3)	K	N	L	M
(4)	N	K	M	L

- A) 1
 B) 2
 C) 3
 ✓ D) 4

Question Type: Multiple Choice
Randomize Answers: No
Date Added: Wed 8th Sep 2021
Last Modified: N/A
QID#: 28,951,024

[Answers](#) | [Edit](#) | [Duplicate](#) | [Used In](#) | [Reorder](#)

[Remove From Test](#)

Question 23

Primary 5 Science » Primary 5 Science (Term 4)

2 pts

The table below shows the boiling point and freezing point of some substances.

substance	freezing point (°C)	boiling point (°C)
P	2	55
Q	10	60
R	15	75
S	30	95

Based on the table above, which statements are correct about the substances?

- A Substance P is in the solid at 5 °C.
- B Substance S is in the liquid state at 90 °C.
- C All the substances are in the liquid state at 40 °C.
- D Substances Q and R are in the gaseous state at 70 °C.

- A) A and B only
- ✓ B) C and B only
- C) A, C and D only
- D) B, C and D only

Question Type: Multiple Choice
Randomize Answers: No
Date Added: Wed 8th Sep 2021
Last Modified: N/A
QID#: 28,951,034

[↗ Answers](#) |
 [✎ Edit](#) |
 [📄 Duplicate](#) |
 [📌 Used In](#) |
 [⬇ Reorder](#)

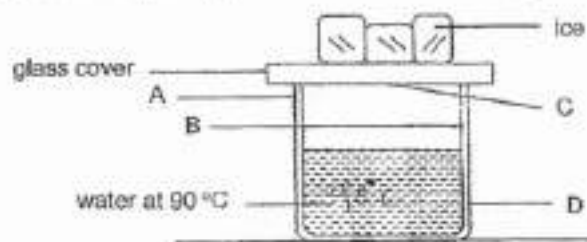
[Remove From Test](#)

Question 24

Primary 5 Science » Primary 5 Science (Term 4)

2 pts

Xuan Kai set up an experiment as shown in the diagram below.



After a while, he noticed that some water droplets had formed. Where were the water droplets formed?

- A) A and B only
- B) A and D only
- ✓ C) C and B only
- D) C and D only

Question Type: Multiple Choice
Randomize Answers: No

Date Added: Wed 8th Sep 2021
 Last Modified: N/A
 QID#: 28,951,043

Answers | Edit | Duplicate | Used In | Reorder

Remove From Test

Question 25

Primary 5 Science » Primary 5 Science (Term 4)

2 pts

Mei Fen hung a wet towel in the bathroom. Which of the following ways would help to dry the towel faster?

- A fold the towel in half
- B open the door of the bathroom
- C use a hairdryer to blow the towel

- A) A and B only
- B) A and C only
- ✓ C) B and C only
- D) A, B and C

Question Type: Multiple Choice
 Randomize Answers: No
 Date Added: Wed 8th Sep 2021
 Last Modified: N/A
 QID#: 28,951,060

Answers | Edit | Duplicate | Used In | Reorder

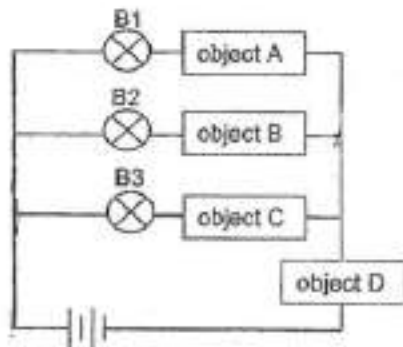
Remove From Test

Question 26

Primary 5 Science » Primary 5 Science (Term 4)

2 pts

Dev set up an electric circuit as shown below.



He observed that only B2 lit up.

Which objects were used in the set-up above?

	object A	object B	object C	object D
(1)	metal ruler	coin	eraser	marble
(2)	marble	metal ruler	coin	eraser
(3)	eraser	coin	marble	metal ruler
(4)	coin	marble	metal ruler	eraser

A) 1

- B) 2
 ✓ C) 3
 D) 4

Question Type: Multiple Choice
Randomize Answers: No
Date Added: Wed 8th Sep 2021
Last Modified: N/A
QID#: 28,951,069

[Answers](#) | [Edit](#) | [Duplicate](#) | [Used In](#) | [Reorder](#)

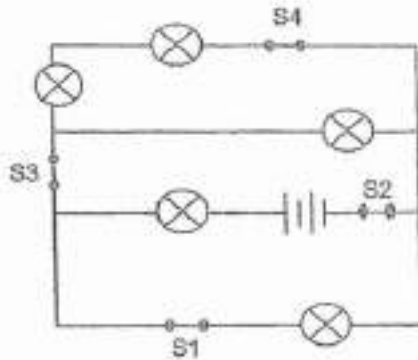
[Remove From Test](#)

Question 27

Primary 5 Science » Primary 5 Science (Term 4)

2 pts

Steven set up a circuit as shown below. All the bulbs and batteries are identical.



All the bulbs were lit when all the four switches were closed. He wanted the most number of bulbs to light up when only one switch is open. Which switch should he open?

- ✓ A) S1
 B) S2
 C) S3
 D) S4

Question Type: Multiple Choice
Randomize Answers: No
Date Added: Wed 8th Sep 2021
Last Modified: N/A
QID#: 28,951,075

[Answers](#) | [Edit](#) | [Duplicate](#) | [Used In](#) | [Reorder](#)

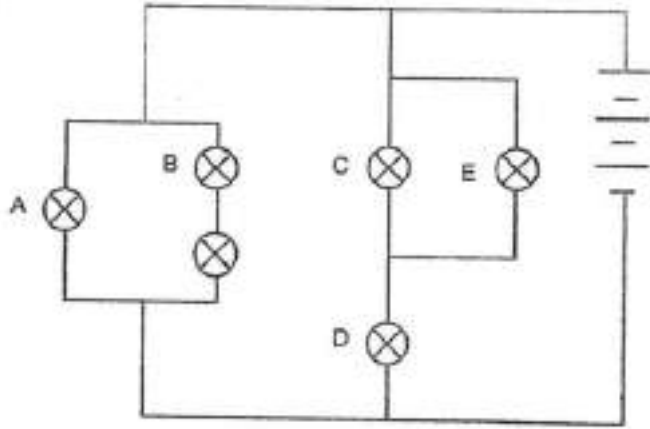
[Remove From Test](#)

Question 28

Primary 5 Science » Primary 5 Science (Term 4)

2 pts

Study the circuit below. All the bulbs and batteries are identical.



Daneesh conducted experiments 1 and 2 using the circuit shown above.

In both experiments, Daneesh removed one light bulb and observed how many light bulbs would remain lighted up. The table below shows his observations.

	number of bulbs that remained lighted up
experiment 1	3
experiment 2	4

Which of the following correctly shows which light bulb Daneesh removed in each of the experiment?

	bulbs removed in	
	experiment 1	experiment 2
(1)	C	A
(2)	C	B
(3)	D	A
(4)	D	B

- A) 1
- B) 2
- C) 3
- ✓ D) 4

Question Type: Multiple Choice
 Randomize Answers: No
 Date Added: Wed 8th Sep 2021
 Last Modified: N/A
 QID#: 28,951,080

[Answers](#) |
 [Edit](#) |
 [Duplicate](#) |
 [Used In](#) |
 [Reorder](#)

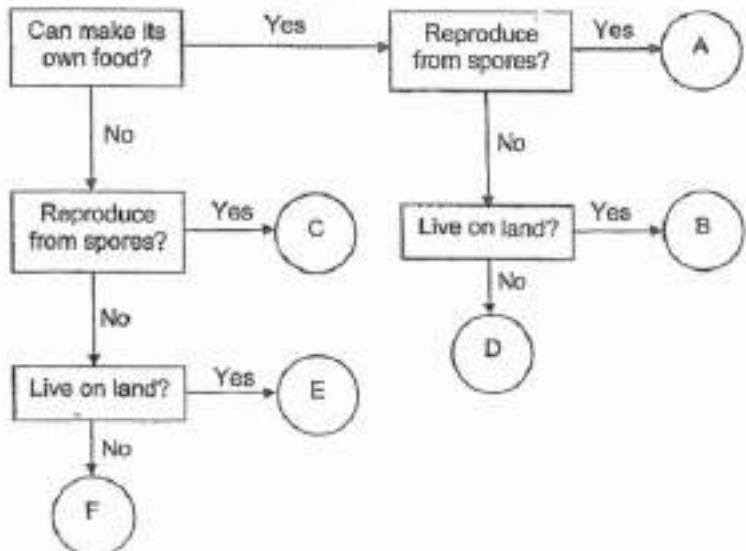
[Remove From Test](#)

Question 29

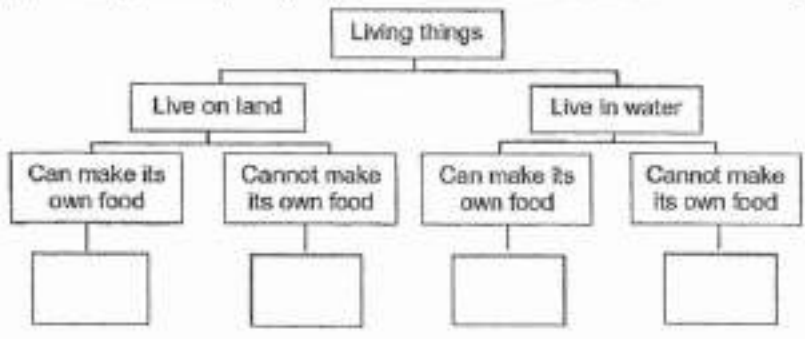
Primary 5 Science » Primary 5 Science (Term 4)

0 pts

The diagram below shows six living things, A, B, C, D, E and F.



(a) Classify the living things B, D, E and F in the chart below. [2]



Question Type: Essay
 Date Added: Wed 8th Sep 2021
 Last Modified: N/A
 QID#: 28,951,086

Correctly answered feedback

B, E, D, F

Incorrectly answered feedback

B, E, D, F

Answers | Edit | Duplicate | Used In | Reorder

Remove From Test

Question 30

Primary 5 Science » Primary 5 Science (Term 4)

0 pts

b) Give a reason why living things A and C cannot be classified in the diagram above

Question Type: Essay
 Date Added: Wed 8th Sep 2021
 Last Modified: N/A
 QID#: 28,951,092

Correctly answered feedback

It was not stated if living things A and C live in water or land

Incorrectly answered feedback

It was not stated if living things A and C live in water or land

[Answers](#) | [Edit](#) | [Duplicate](#) | [Used In](#) | [Reorder](#)

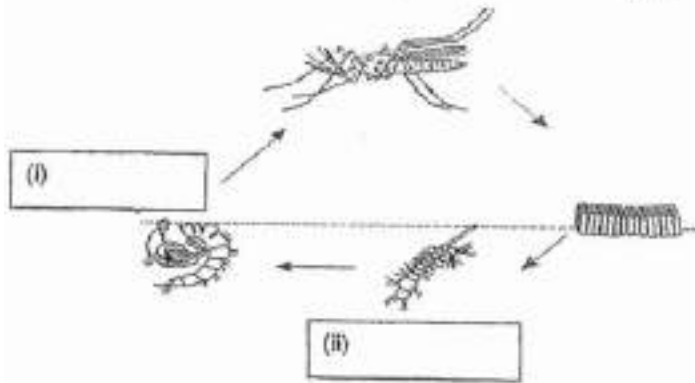
[Remove From Test](#)

Question 31

Primary 5 Science » Primary 5 Science (Term 4)

0 pts

The diagram below shows the life cycle of an Aedes mosquito.



(a) Name the missing stages of the life cycle above.

Question Type: Essay
Date Added: Wed 8th Sep 2021
Last Modified: N/A
QID#: 28,951,115

Correctly answered feedback

i.pupa
 ii.larva

Incorrectly answered feedback

i.pupa
 ii.larva

[Answers](#) | [Edit](#) | [Duplicate](#) | [Used In](#) | [Reorder](#)

[Remove From Test](#)

Question 32

Primary 5 Science » Primary 5 Science (Term 4)

0 pts

The table below shows the effect of temperature on the average time taken for an Aedes mosquito to hatch from an egg and develop into an adult.

temperature (°C)	average length of the life cycle of an Aedes mosquito (days)
16	43
22	25
28	13
33	12

(b) Based on the information given, state the relationship between temperature and the average length of the life cycle of an Aedes mosquito. [1]

Question Type: Essay
Date Added: Wed 8th Sep 2021
Last Modified: N/A
QID#: 28,951,125

Correctly answered feedback

The higher the temperature, the shorter the average length of the life cycle of an Aedes mosquito

Incorrectly answered feedback

The higher the temperature, the shorter the average length of the life cycle of an Aedes mosquito

[Answers](#) | [Edit](#) | [Duplicate](#) | [Used In](#) | [Reorder](#)

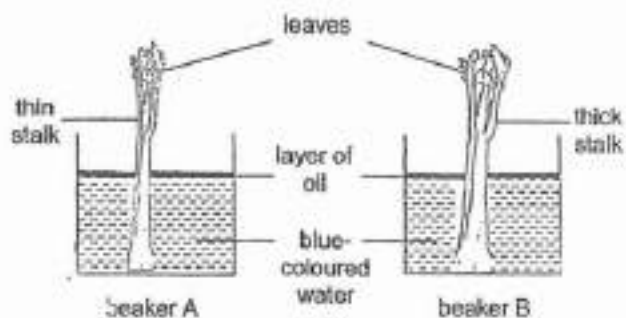
[Remove From Test](#)

Question 33

Primary 5 Science » Primary 5 Science (Term 4)

0 pts

Misha set up an experiment as shown below. She placed a stalk of celery in each beaker. She poured an equal amount of oil and blue-coloured water into similar beakers A and B. She then placed the beakers near the window.



(a) What is the purpose of putting oil into both beakers?

Question Type: Essay
Date Added: Wed 8th Sep 2021
Last Modified: N/A
QID#: 28,951,281

Correctly answered feedback

It is to prevent the water from evaporating and affecting the results of the experiment

Incorrectly answered feedback

It is to prevent the water from evaporating and affecting the results of the experiment

[Answers](#) | [Edit](#) | [Duplicate](#) | [Used In](#) | [Reorder](#)

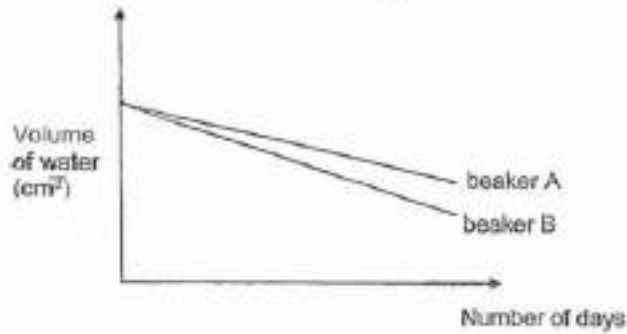
[Remove From Test](#)

Question 34

Primary 5 Science » Primary 5 Science (Term 4)

0 pts

The volume of water was observed and recorded daily over a period of four days and the results were shown in the graph below.



(b) What was the aim of Misha's experiment?

Question Type: Essay
Date Added: Wed 8th Sep 2021
Last Modified: N/A
QID#: 28,951,473

Correctly answered feedback

The aim of Misha's experiment is to observe if the thick stalk absorb more water than the thin stalk

Incorrectly answered feedback

The aim of Misha's experiment is to observe if the thick stalk absorb more water than the thin stalk

[Answers](#) | [Edit](#) | [Duplicate](#) | [Used In](#) | [Reorder](#)

[Remove From Test](#)

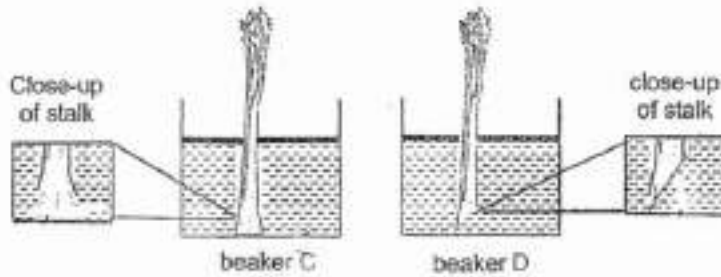
Question 35

Primary 5 Science » Primary 5 Science (Term 4)

0 pts

Misha conducted another experiment using two similar celery stalks and placed each into similar beakers C and D as shown in the diagram below.

The stem of the celery in beaker C was left uncut while the stem of the celery in beaker D was cut at a slanted angle.



(c) Would the decrease in volume of water in beaker D be less than, the same as or greater than that in beaker C? Give a reason for your answer.

Question Type: Essay
Date Added: Wed 8th Sep 2021
Last Modified: N/A
QID#: 28,951,491

Correctly answered feedback

The decrease in the volume of water in beaker D is greater than. The cut part of the stalk in beaker D has a larger surface area in contact with water

Incorrectly answered feedback

The decrease in the volume of water in beaker D is greater than. The cut part of the stalk in beaker D has a larger surface area in contact with water

[Answers](#) | [Edit](#) | [Duplicate](#) | [Used In](#) | [Reorder](#)

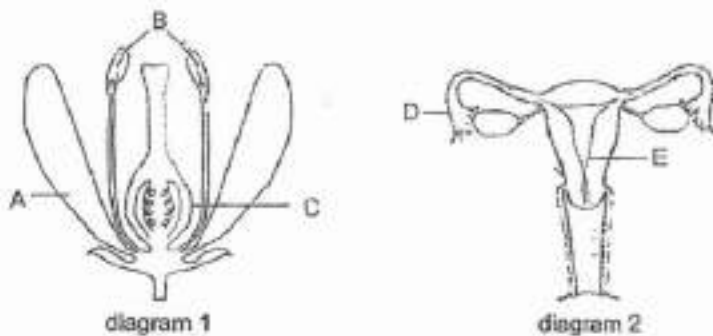
[Remove From Test](#)

Question 36

Primary 5 Science » Primary 5 Science (Term 4)

0 pts

Diagrams 1 and 2 show the plant and human reproductive systems respectively.



(a) In diagram 1, which part(s) of the flower A, B or C, can be removed such that the flower can still grow into a fruit? Explain your answer.

Question Type: Essay
Date Added: Wed 8th Sep 2021

Last Modified: N/A
QID#: 28,951,498

Correctly answered feedback

Part A and B. The stigma of the flower is able to receive pollen grains from another flower, hence fertilisation can still take place

Incorrectly answered feedback

Part A and B. The stigma of the flower is able to receive pollen grains from another flower, hence fertilisation can still take place

[Answers](#) | [Edit](#) | [Duplicate](#) | [Used In](#) | [Reorder](#)

[Remove From Test](#)

Question 37

Primary 5 Science » Primary 5 Science (Term 4)

0 pts

b) Based on the two diagrams above, which parts, A, B, C D or E, correctly identify where fertilisation makes place in the plant and human reproductive systems?

Question Type: Essay
Date Added: Wed 8th Sep 2021
Last Modified: N/A
QID#: 28,951,508

Correctly answered feedback

Part C and D

Incorrectly answered feedback

Part C and D

[Answers](#) | [Edit](#) | [Duplicate](#) | [Used In](#) | [Reorder](#)

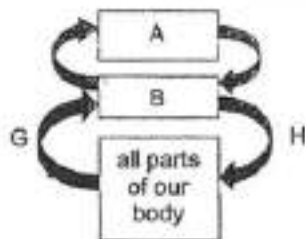
[Remove From Test](#)

Question 38

Primary 5 Science » Primary 5 Science (Term 4)

1 pt

The diagram below shows how blood travels in our body.



(a) Name organs A and B.

organ A: _____

Accepted answers:

✓ lungs

Question Type: Free Text
Date Added: Wed 8th Sep 2021

Last Modified: Wed 8th Sep 2021
 QID#: 28,951,514

[Answers](#) | [Edit](#) | [Duplicate](#) | [Used In](#) | [Reorder](#)

[Remove From Test](#)

Question 39

Primary 5 Science » Primary 5 Science (Term 4)

1 pt

Organ B: _____

Accepted answers:

✓ heart

Question Type: Free Text
 Date Added: Wed 8th Sep 2021
 Last Modified: N/A
 QID#: 28,951,523

[Answers](#) | [Edit](#) | [Duplicate](#) | [Used In](#) | [Reorder](#)

[Remove From Test](#)

Question 40

Primary 5 Science » Primary 5 Science (Term 4)

1 pt

b) Name one substance in the blood where its amount is higher in G than in H

Accepted answers:

✓ carbon dioxide

Question Type: Free Text
 Date Added: Wed 8th Sep 2021
 Last Modified: N/A
 QID#: 28,951,538

[Answers](#) | [Edit](#) | [Duplicate](#) | [Used In](#) | [Reorder](#)

[Remove From Test](#)

Question 41

Primary 5 Science » Primary 5 Science (Term 4)

0 pts

The table below shows the heart rate of two runners at rest and while jogging.

runner	heart rate (beats per minute)	
	at rest	while jogging
X	70	100
Y	80	125

(c) Why do the runners have a higher heart rate while jogging than at rest? |

Question Type: Essay
 Date Added: Wed 8th Sep 2021
 Last Modified: N/A
 QID#: 28,951,593

Correctly answered feedback

The heart needs to pump blood faster to transport more oxygen and more digested food to all parts of the body to produce more energy

Incorrectly answered feedback

The heart needs to pump blood faster to transport more oxygen and more digested food to all parts of the body to produce more energy

[Answers](#) | [Edit](#) | [Duplicate](#) | [Used In](#) | [Reorder](#)

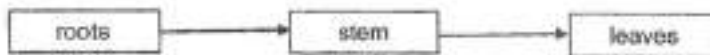
[Remove From Test](#)

Question 42

Primary 5 Science » Primary 5 Science (Term 4)

0 pts

The diagram below shows the movement of water in a plant.



(d) State one difference between the direction of movement of water in plants and the direction of movement of blood in the human body.

Question Type: Essay
Date Added: Wed 8th Sep 2021
Last Modified: N/A
QID#: 28,951,602

Correctly answered feedback

Water is transported upward from the roots to the leaf in plants while blood is circulated in the human body

Incorrectly answered feedback

Water is transported upward from the roots to the leaf in plants while blood is circulated in the human body

[Answers](#) | [Edit](#) | [Duplicate](#) | [Used In](#) | [Reorder](#)

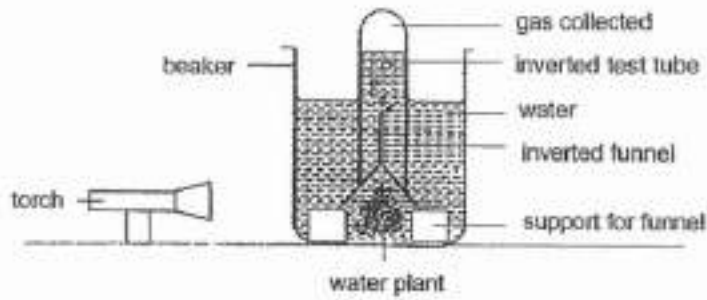
[Remove From Test](#)

Question 43

Primary 5 Science » Primary 5 Science (Term 4)

0 pts

- i. Robert set up the experiment as shown below in a dark room to find out which colour of light allows the highest rate of photosynthesis.



He shone the torch at the water plant for 25 minutes. He observed the number of bubbles given out by the water plant during that time and recorded the results in the table below. He then repeated the experiment using different coloured lights.

colour of lights	number of bubbles produced
red	16
blue	22
green	0
yellow	14

- (a) Based on Robert's results, what could he conclude from his experiment?

Question Type: Essay
Date Added: Wed 8th Sep 2021
Last Modified: N/A
QID#: 28,951,616

Correctly answered feedback

Blue light allows the highest rate go photosynthesis

Incorrectly answered feedback

Blue light allows the highest rate go photosynthesis

[Answers](#) | [Edit](#) | [Duplicate](#) | [Used In](#) | [Reorder](#)

[Remove From Test](#)

Question 44

Primary 5 Science » Primary 5 Science (Term 4)

0 pts

- b) With the same set-up, suggest another observation Robert could measure to achieve the same aim

Question Type: Essay
Date Added: Wed 8th Sep 2021
Last Modified: N/A
QID#: 28,951,622

Correctly answered feedback

The amount of oxygen collected at the top of the inverted test tube

Incorrectly answered feedback

The amount of oxygen collected at the top of the inverted test tube

[Answers](#) | [Edit](#) | [Duplicate](#) | [Used In](#) | [Reorder](#)

[Remove From Test](#)

Question 45

Primary 5 Science » Primary 5 Science (Term 4)

0 pts

Robert also wanted to find out if the amount of light affects the number of bubbles produced.

c) Describe how Robert could carry out the experiment without changing any go the above apparatus

Action : _____

Reason : _____

Question Type: Essay
Date Added: Wed 8th Sep 2021
Last Modified: N/A
QID#: 28,951,635

Correctly answered feedback

Action: Move the torch closer tot he plant
Reason: To count the number of the bubbles produced

Incorrectly answered feedback

Action: Move the torch closer tot he plant
Reason: To count the number of the bubbles produced

[Answers](#) | [Edit](#) | [Duplicate](#) | [Used In](#) | [Reorder](#)

[Remove From Test](#)

Question 46

Primary 5 Science » Primary 5 Science (Term 4)

0 pts

d) Describe the process of photosynthesis in green plants

Question Type: Essay
Date Added: Wed 8th Sep 2021
Last Modified: N/A
QID#: 28,951,645

Correctly answered feedback

Plants take in carbon dioxide and water from the surroundings and in the presence of light and chlorophyll, if produce's sugar and oxygen.

Incorrectly answered feedback

Plants take in carbon dioxide and water from the surroundings and in the presence of light and chlorophyll, if produce's sugar and oxygen.

[Answers](#) | [Edit](#) | [Duplicate](#) | [Used In](#) | [Reorder](#)

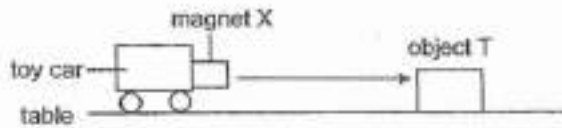
[Remove From Test](#)

Question 47

Primary 5 Science » Primary 5 Science (Term 4)

0 pts

Martin attached magnet X to a toy car and placed the toy car on a table. He observed that the toy car moved towards object T as shown by the direction of the arrow below.



- (a) Based on his observation, Martin cannot conclude that object T is a magnet. Give a reason. [

Question Type: Essay
Date Added: Wed 8th Sep 2021
Last Modified: N/A
QID#: 28,951,654

Correctly answered feedback

As magnet is attached to the toy car, the toy car was drawn towards object T. However, we cannot conclude if object T is a magnetic material or a magnet

Incorrectly answered feedback

As magnet is attached to the toy car, the toy car was drawn towards object T. However, we cannot conclude if object T is a magnetic material or a magnet

[Answers](#) | [Edit](#) | [Duplicate](#) | [Used In](#) | [Reorder](#)

[Remove From Test](#)

Question 48

Primary 5 Science » Primary 5 Science (Term 4)

0 pts

- b) Using only magnet X and object T, describe what Martin should do to conclude whether object T is a magnet or not

Question Type: Essay
Date Added: Wed 8th Sep 2021
Last Modified: N/A
QID#: 28,951,668

Correctly answered feedback

Martin can flip object T over as like poles repel and unlike poles attract. If object T is still attracted towards the magnet, object T is a magnetic material. However, if object T repels the magnet, it is also a magnet

Incorrectly answered feedback

Martin can flip object T over as like poles repel and unlike poles attract. If object T is still attracted towards the magnet, object T is a magnetic material. However, if object T repels the magnet, it is also a magnet

[Answers](#) | [Edit](#) | [Duplicate](#) | [Used In](#) | [Reorder](#)

[Remove From Test](#)

Question 49

Primary 5 Science » Primary 5 Science (Term 4)

0 pts

- c) Martin then replaced magnet X with a bigger magnet and carried out a similar experiment. He predicted that the toy car would move towards object T at a faster rate as a bigger magnet would

have greater magnetic strength. Do you agree? Give a reason for your answer

Question Type: Essay
Date Added: Wed 8th Sep 2021
Last Modified: N/A
QID#: 28,951,678

Correctly answered feedback

No. A smaller magnet can have a stronger magnetic force than a bigger magnet

Incorrectly answered feedback

No. A smaller magnet can have a stronger magnetic force than a bigger magnet

[Answers](#) | [Edit](#) | [Duplicate](#) | [Used In](#) | [Reorder](#)

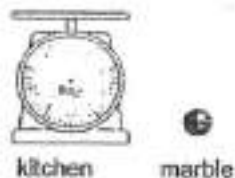
[Remove From Test](#)

Question 50

Primary 5 Science » Primary 5 Science (Term 4)

0 pts

Gary wanted to find out the volume of a marble. He used a kitchen scale to do so.



(a) Joshua told Gary that he had used the wrong apparatus. What could the kitchen scale be used to find out about the marble?

Question Type: Essay
Date Added: Wed 8th Sep 2021
Last Modified: N/A
QID#: 28,951,681

Correctly answered feedback

The kitchen scale can find out the mass of the marble

Incorrectly answered feedback

The kitchen scale can find out the mass of the marble

[Answers](#) | [Edit](#) | [Duplicate](#) | [Used In](#) | [Reorder](#)

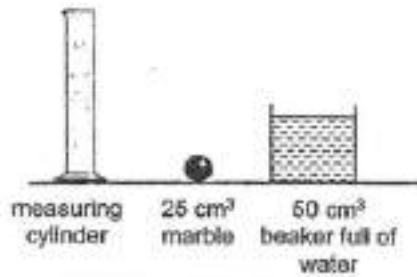
[Remove From Test](#)

Question 51

Primary 5 Science » Primary 5 Science (Term 4)

1 pt

Joshua told Gary to use the apparatus below.



Gary poured the beaker of water into the measuring cylinder. Then, he dropped in the marble gently as shown in the diagram below.



(b) State the reading for the new water level observed.

Accepted answers:

- ✓ 75 cm³
- ✓ 75cm³
- ✓ 75

Question Type: Free Text
Date Added: Wed 8th Sep 2021
Last Modified: N/A
QID#: 28,951,689

[Answers](#) | [Edit](#) | [Duplicate](#) | [Used In](#) | [Reorder](#)

[Remove From Test](#)

Question 52

Primary 5 Science » Primary 5 Science (Term 4)

0 pts

c) What could Gary conclude about the marble in this experiment?

Question Type: Essay
Date Added: Wed 8th Sep 2021
Last Modified: N/A
QID#: 28,951,692

Correctly answered feedback

Gary can conclude that the marble has a volume and occupy space

Incorrectly answered feedback

Gary can conclude that the marble has a volume and occupy space

[Answers](#) | [Edit](#) | [Duplicate](#) | [Used In](#) | [Reorder](#)

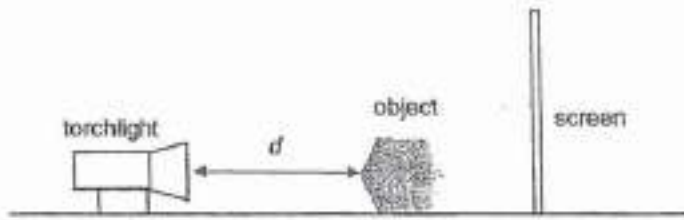
[Remove From Test](#)

Question 53

Primary 5 Science » Primary 5 Science (Term 4)

0 pts

Faridah conducted an experiment to investigate how the distance between the torchlight and object, d , would affect the height of the shadow.



She measured the height of the shadow formed on the screen and repeated the experiment three times before changing the distance. She recorded the results in the table below.

d (cm)	height of the shadow (cm)			
	try 1	try 2	try 3	average
10	8.3	8.5	8.6	8.5
15	5.4	5.2	5.1	5.2
20	3.5	3.1	3.3	3.3

(a) Why did Faridah repeat the experiment three times for each distance?

Question Type: Essay
Date Added: Wed 8th Sep 2021
Last Modified: N/A
QID#: 28,951,696

Correctly answered feedback

To obtain reliable results

Incorrectly answered feedback

To obtain reliable results

[Answers](#) | [Edit](#) | [Duplicate](#) | [Used In](#) | [Reorder](#)

[Remove From Test](#)

Question 54

Primary 5 Science » Primary 5 Science (Term 4)

0 pts

b) If Faridah kept distance d at 10cm, how would the height of the shadow change if the screen was moved further away from the object?

Question Type: Essay
Date Added: Wed 8th Sep 2021
Last Modified: N/A
QID#: 28,951,702

Correctly answered feedback

height of shadow increased

Incorrectly answered feedback

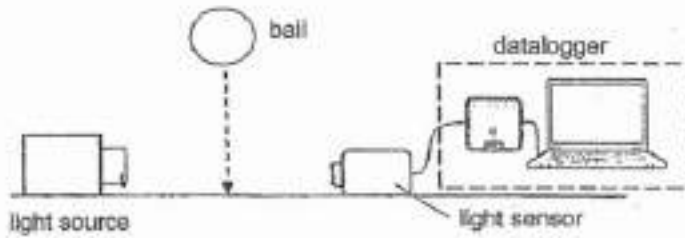
height of shadow increased

[Answers](#) | [Edit](#) | [Duplicate](#) | [Used In](#) | [Reorder](#)

[Remove From Test](#)

Question 55

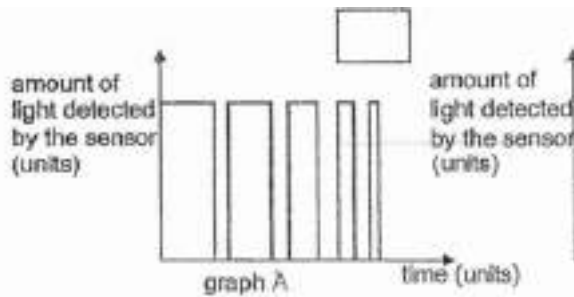
In another experiment, a ball was dropped in between a light source and a light sensor as shown in the diagram below.



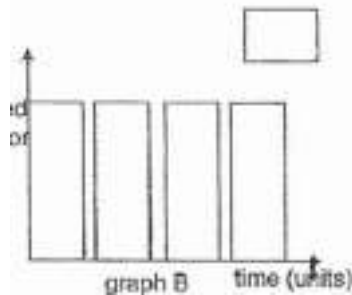
As the ball bounced, it bounced lower. The duration of light captured by the light sensor decreased. The amount of light detected by the light sensor was then recorded.

(c) Which graph A, B or C correctly shows the results of the experiment? Put a tick (✓) in the correct box provided.

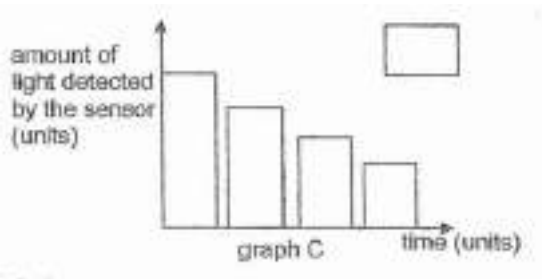
✓ A)



B)



C)



Question Type: Multiple Choice
Randomize Answers: No
Date Added: Wed 8th Sep 2021
Last Modified: N/A
QID#: 28,951,716

Question 56

Primary 5 Science » Primary 5 Science (Term 4)

0 pts

d) State the property of light demonstrated in the experiment above

Question Type: Essay
Date Added: Wed 8th Sep 2021
Last Modified: N/A
QID#: 28,951,721

Correctly answered feedback

light travels in a straight line

Incorrectly answered feedback

light travels in a straight line

[Answers](#) | [Edit](#) | [Duplicate](#) | [Used In](#) | [Reorder](#)

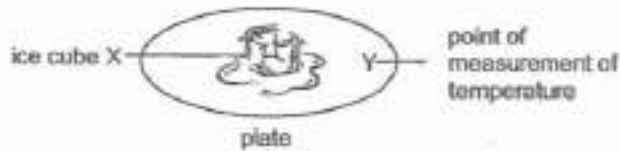
[Remove From Test](#)

Question 57

Primary 5 Science » Primary 5 Science (Term 4)

0 pts

Kannan placed ice cube X on a plate as shown below.



She used a sensor to measure the temperature of the plate at point Y and recorded the results below.

time (mins)	temperature of plate (°C)
0	27
1	26
2	25
3	25

(a) Give a reason why the temperature of point Y decreased.

Question Type: Essay
Date Added: Wed 8th Sep 2021
Last Modified: N/A
QID#: 28,951,728

Correctly answered feedback

The ice cube gained heat from the plate and the plate lost heat to the ice cube

Incorrectly answered feedback

The ice cube gained heat from the plate and the plate lost heat to the ice cube

[Answers](#) | [Edit](#) | [Duplicate](#) | [Used In](#) | [Reorder](#)

[Remove From Test](#)

Question 58

Primary 5 Science » Primary 5 Science (Term 4)

0 pts

After ice cube X had melted completely, the water from the ice cube was left on the plate for an hour. The water was poured back into part Z of the same tray used to make ice cube X and placed in the freezer.



(b) Would the mass of the ice cube be less than, the same as or greater than ice cube X? Explain your answer.

Question Type: Essay
Date Added: Wed 8th Sep 2021
Last Modified: N/A
QID#: 28,951,735

Correctly answered feedback

The mass of the ice cube would be less than ice cube X as some of the water from ice cube X would have evaporated so there was less water than, some water gained heat from the surrounding and evaporated. Hence there was less water to freeze

Incorrectly answered feedback

The mass of the ice cube would be less than ice cube X as some of the water from ice cube X would have evaporated so there was less water than, some water gained heat from the surrounding and evaporated. Hence there was less water to freeze

[Answers](#) | [Edit](#) | [Duplicate](#) | [Used In](#) | [Reorder](#)

[Remove From Test](#)

Question 59

Primary 5 Science » Primary 5 Science (Term 4)

0 pts

Mr Soh was driving his car on a cold day. Water droplets formed on the inner surface of the windscreen. He noticed that water droplets were not formed on a sunny day.



water droplets formed on inner surface of the windscreen on a cold day

(a) Explain how the water droplets were formed on a cold day.

Question Type: Essay
Date Added: Wed 8th Sep 2021
Last Modified: N/A
QID#: 28,951,746

Correctly answered feedback

The warm water vapour in the car lost heat to the cool inner surface of the windscreen and condensed to form water droplets

Incorrectly answered feedback

The warm water vapour in the car lost heat to the cool inner surface of the windscreen and condensed to form water droplets

[Answers](#) | [Edit](#) | [Duplicate](#) | [Used In](#) | [Reorder](#)

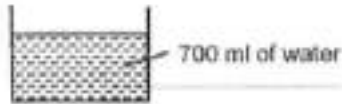
[Remove From Test](#)

Question 60

Primary 5 Science » Primary 5 Science (Term 4)

0 pts

Mr Soh wanted to find out the rate of evaporation at different times of the day. He filled three similar containers with 700 ml of water each and placed each of the containers in the garden at different times of the day.



At the end of each time period, he recorded the volume of water left in the container in the table below.

time period	10 am - 12 pm	3 pm - 5 pm	8 pm - 10 pm
volume of water left in the container (ml)	440	500	650

(b) Based on the results above, which period was the hottest? Explain your answer.

Question Type: Essay
Date Added: Wed 8th Sep 2021
Last Modified: N/A
QID#: 28,951,750

Correctly answered feedback

10 pm to 12pm as most water evaporated at that time, that period was the hottest. The volume of water in the container was the least as the rate of evaporation was the greatest

Incorrectly answered feedback

10 pm to 12pm as most water evaporated at that time, that period was the hottest. The volume of water in the container was the least as the rate of evaporation was the greatest

[Answers](#) | [Edit](#) | [Duplicate](#) | [Used In](#) | [Reorder](#)

[Remove From Test](#)

Question 61

Primary 5 Science » Primary 5 Science (Term 4)

0 pts

c) What is evaporation

Question Type: Essay
Date Added: Wed 8th Sep 2021
Last Modified: N/A
QID#: 28,951,756

Correctly answered feedback

It is then change in the state from liquid to gas at any temperature.

Incorrectly answered feedback

It is then change in the state from liquid to gas at any temperature.

[Answers](#) |
 [Edit](#) |
 [Duplicate](#) |
 [Used In](#) |
 [Reorder](#)

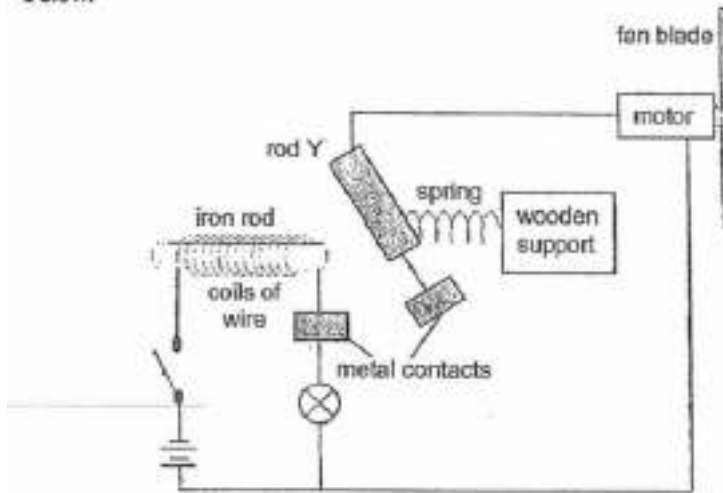
[Remove From Test](#)

Question 62

Primary 5 Science » Primary 5 Science (Term 4)

0 pts

Hui Bin made an electrical system for a school project. The circuit is shown below.



When the switch was closed, the motor turned the fan blades.

- (a) Apart from being an electrical conductor, state another property of the material of rod Y for the system to work.

Question Type: Essay
Date Added: Wed 8th Sep 2021
Last Modified: N/A
QID#: 28,951,759

Correctly answered feedback

It has to be a magnetic material

Incorrectly answered feedback

It has to be a magnetic material

[Answers](#) |
 [Edit](#) |
 [Duplicate](#) |
 [Used In](#) |
 [Reorder](#)

[Remove From Test](#)

Question 63

Primary 5 Science » Primary 5 Science (Term 4)

0 pts

- b) Explain how the fan was able to work after the switch was closed

Question Type: Essay
Date Added: Wed 8th Sep 2021
Last Modified: N/A
QID#: 28,951,765

Correctly answered feedback

After the switch was closed, it formed a closed circuit so electric current can flow through and the iron rod became a magnet and attracted rod Y, thus the two metal contacts touched each other then the fan was able to work as a closed circuit is formed.

Incorrectly answered feedback

After the switch was closed, it formed a closed circuit so electric current can flow through and the iron rod became a magnet and attracted rod Y, thus the two metal contacts touched each other then the fan was able to work as a closed circuit is formed

[Answers](#) | [Edit](#) | [Duplicate](#) | [Used In](#) | [Reorder](#)

[Remove From Test](#)

Question 64

Primary 5 Science » Primary 5 Science (Term 4)

0 pts

c) What would happen to the brightness of the light bulb when another bulb was added between the batteries and the switch?

Question Type: Essay
Date Added: Wed 8th Sep 2021
Last Modified: N/A
QID#: 28,951,780

Correctly answered feedback

The brightness of the light bulb would decrease as it was not in a parallel circuit so the brightness of the light bulb would decrease

Incorrectly answered feedback

The brightness of the light bulb would decrease as it was not in a parallel circuit so the brightness of the light bulb would decrease

[Answers](#) | [Edit](#) | [Duplicate](#) | [Used In](#) | [Reorder](#)

[Remove From Test](#)

Question 65

Primary 5 Science » Primary 5 Science (Term 4)

0 pts

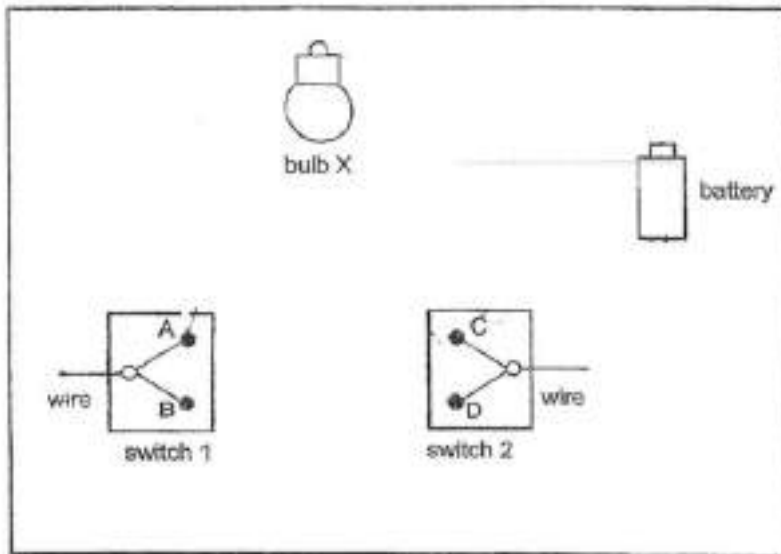
William wanted to set up a circuit to light up a hall using two special switches. Switch 1 could be turned to positions A or B while switch 2 could be turned to positions C or D.

He set up the circuit so that the bulb would be lit as shown in the table below.

position of switch		bulb X is lit
switch 1	switch 2	
A	C	Yes
A	D	Yes
B	D	No
B	C	No

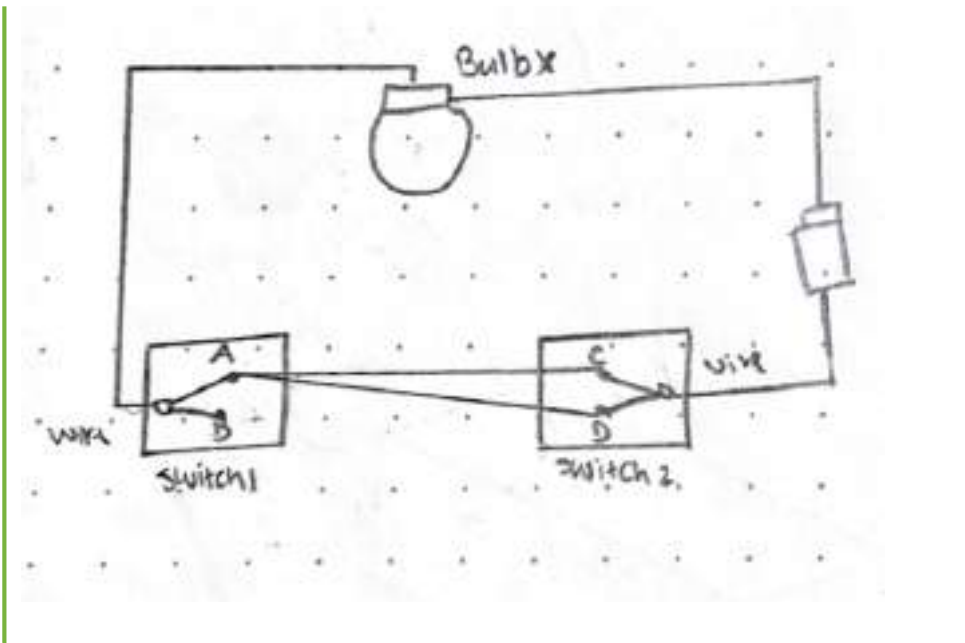
The diagram below shows part of the circuit.

Complete the circuit so that it would work as shown in the table above. [2]

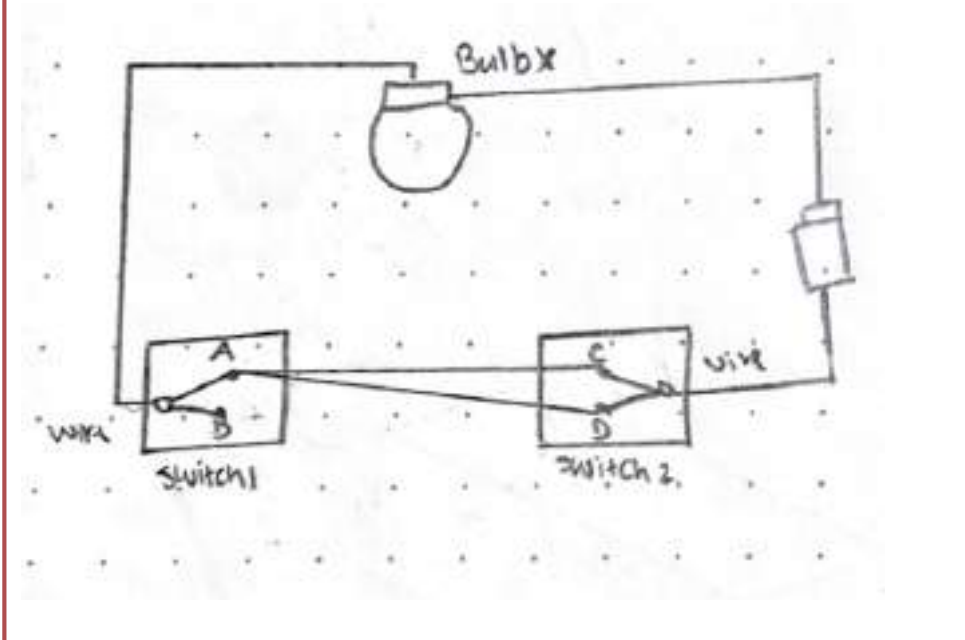


Question Type: Essay
 Date Added: Wed 8th Sep 2021
 Last Modified: Mon 13th Sep 2021
 QID#: 28,951,787

Correctly answered feedback



Incorrectly answered feedback



[Answers](#) | [Edit](#) | [Duplicate](#) | [Used In](#) | [Reorder](#)

[Remove From Test](#)